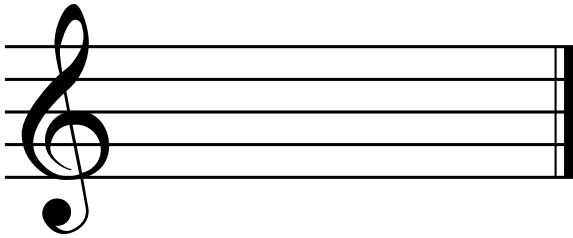
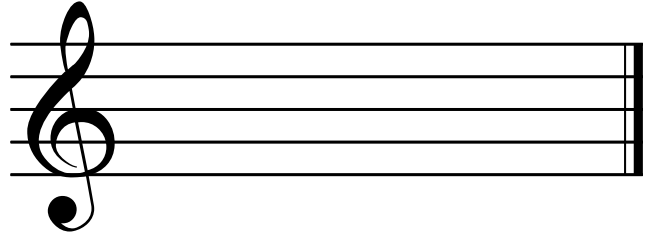


MusIQ Club Beginner Level 2C: Review Worksheet

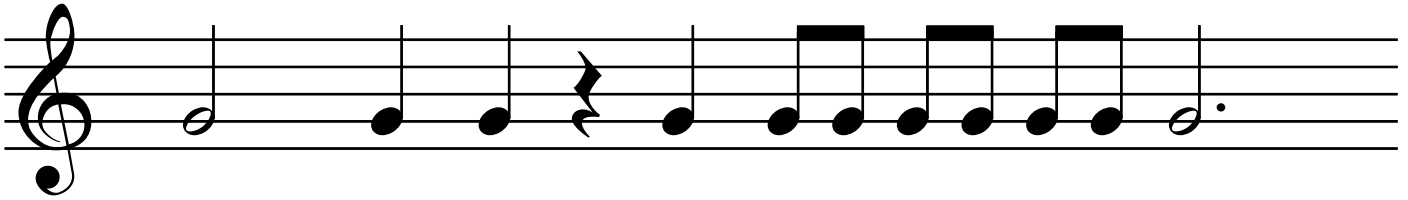
Draw a quarter rest:



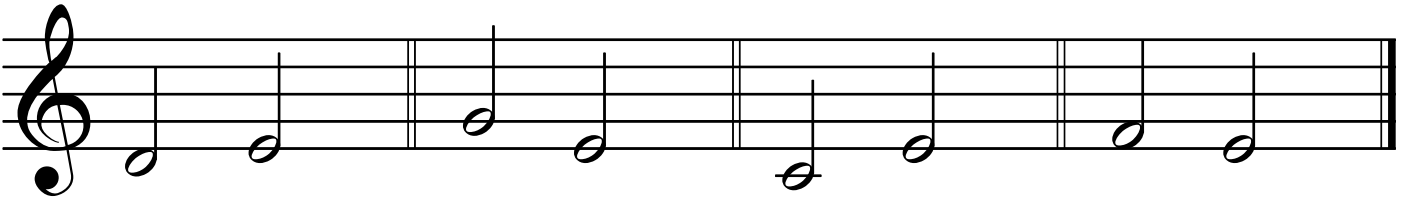
Draw a pair of eighth notes:



Complete this rhythm by adding a 3/4 time signature and the missing barlines:



Circle the correct answer under each pair of notes:



Skip Up
Step Up

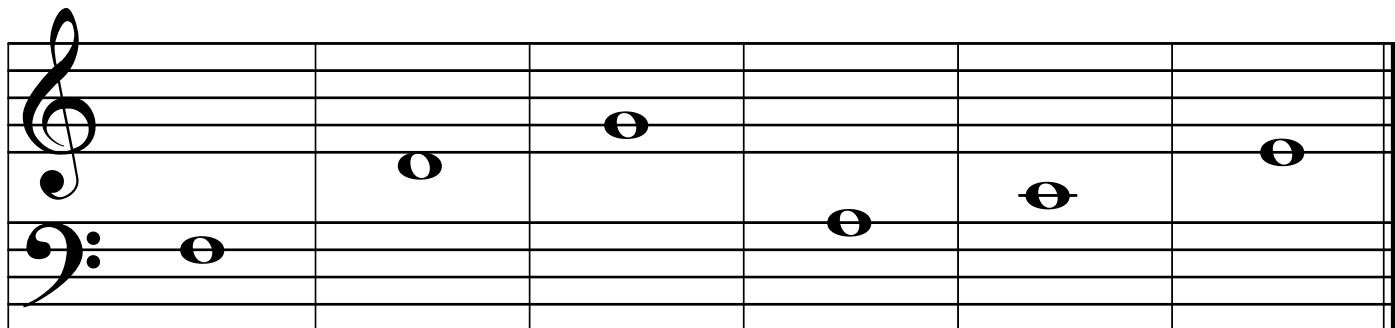
Skip Down
Step Down

Skip Down
Skip Up

Step Down
Skip Down

MusIQ Club Beginner Level 2C Review - page 2

Name the following Grand Staff notes:



Draw a line connecting the following terms and symbols to the correct meaning:



Bass F Clef

2. 3/4 Time Signature

Forte - play loudly



Treble G Clef



Eighth notes

3 beats in every measure

Quarter rest - one beat of silence