

MusIQ Club Level 2: Theory Worksheet

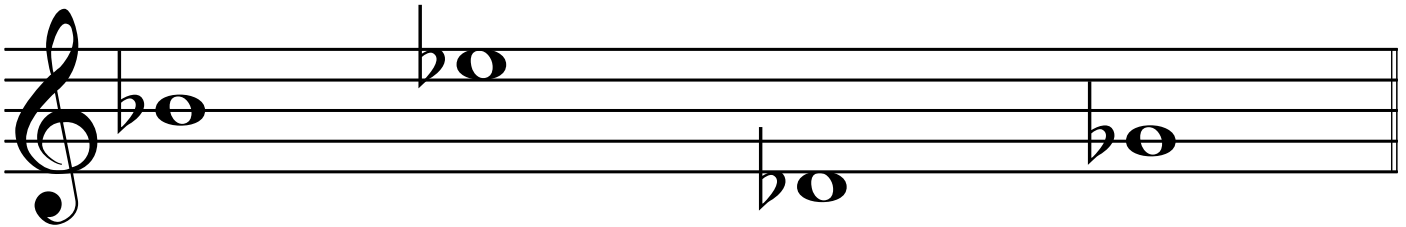
Flats

A flat sign tells us to move the written note down one semitone.

A flat sign looks like this:



In the staff below, there are 4 different flat notes. Take a look at how each flat is written. The line notes have a flat that is on the same line. The space notes have a flat that is on the same space. **Copy each note and flat below.**



Flats follow the same rules as sharps for writing:

When we want to make a note into a flat note, the flat comes **before the note.**

When we want to write the **name** of the flat note, the flat comes **after the letter name.**

Name each of the following notes. The example shows you how.

Ex: A \flat _____ _____ _____ _____

The F Major Scale, has a B \flat instead of a B. Write the F Major scale using whole notes, then play it on your piano.

