

MusIQ Club Level 2: Theory Worksheet

Sharps

A sharp sign tells us to move the written note up one semitone.

A sharp sign looks like this:



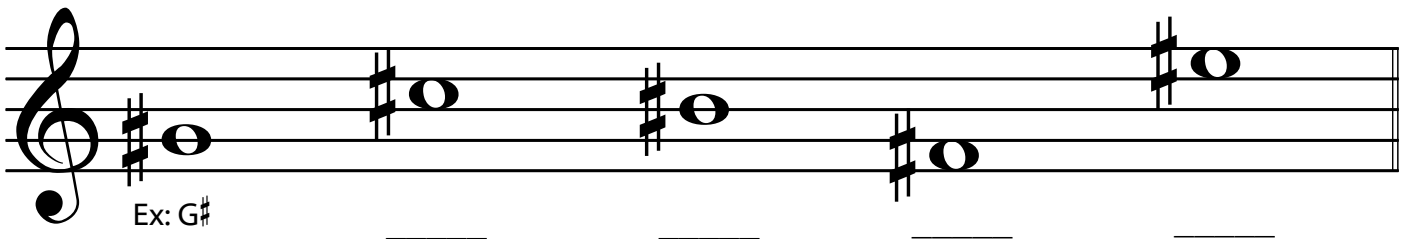
In the staff below, there are 4 different sharp notes. Take a look at how each sharp is written. The line notes have a sharp that is on the same line. The space notes have a sharp that is on the same space. **Copy each note and sharp below.**



When we want to make a note into a sharp note, the sharp comes **before the note** (see above).

When we want to write the **name** of the sharp note, the sharp comes **after the letter name**.

Name each of the following notes. The example shows you how.



Our new scale, the G Major Scale, has an F# instead of an F. Write the G Major scale using whole notes, then play it on your piano.

