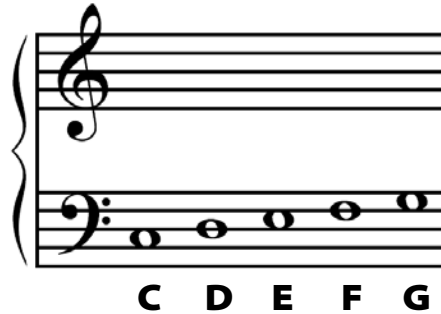


MusIQ Club Beginner Level 3B

Big C Position – New Bass Clef Notes



Write the note names in the boxes below the Grand Staff:

A musical staff with a bass clef and a treble clef. The bass clef staff contains five notes: C, D, E, F, G. The treble clef staff is empty. Below the staff, there are eight empty boxes for writing note names.

Draw the note that matches the letter name below each measure:

A musical staff with a bass clef and a treble clef. The bass clef staff contains five notes: C, F, D, G, F, E, C. The treble clef staff is empty. Below the staff, the letters C, F, D, G, F, E, and C are printed under their respective notes.