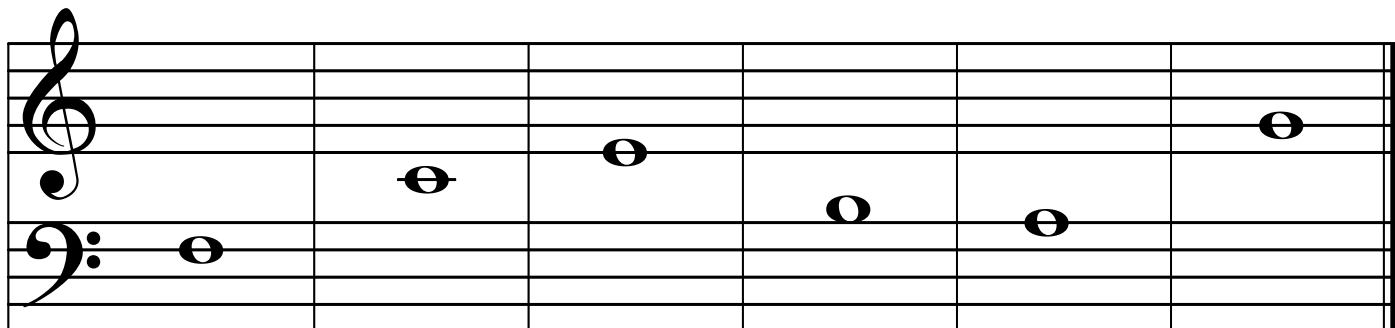


MusIQ Club Beginner Level 3A Review Worksheet

Name the following Grand Staff notes:



Draw a line connecting the following terms and symbols to the correct meaning:



2. 3/4 Time Signature



Bass F Clef

Treble G Clef

Eighth notes

3 beats in every measure

Quarter rest - one beat of silence

Bonus:

How many eighth notes does it take to equal a quarter note? _____

How many eighth notes does it take to equal a whole note? _____