

MusIQ Club Beginner Level 2B: 4/4 Time – Drawing Barlines and Repeat Signs

This song is in 4/4 Time.

Draw the Barlines to divide up the music into 4-beat groups.

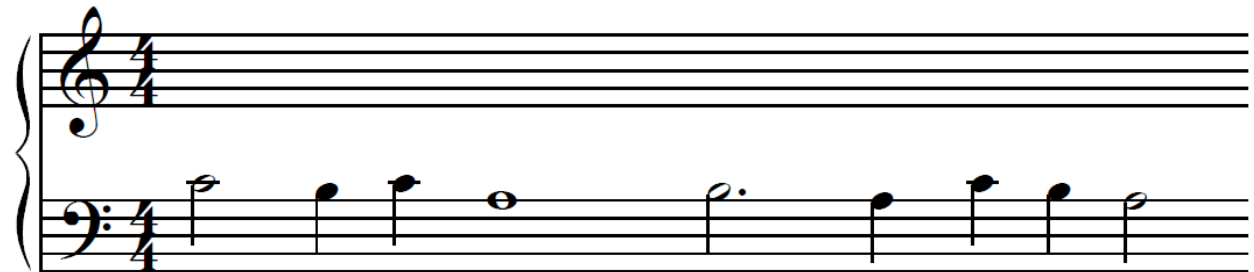
Draw a Repeat Sign at the end.



Here is another song in 4/4 Time.

Draw the Barlines to divide up the music into 4-beat groups.

Draw a Repeat Sign at the end.



BONUS QUESTION: Can you play these 2 songs on your piano counting 4 beats per bar?